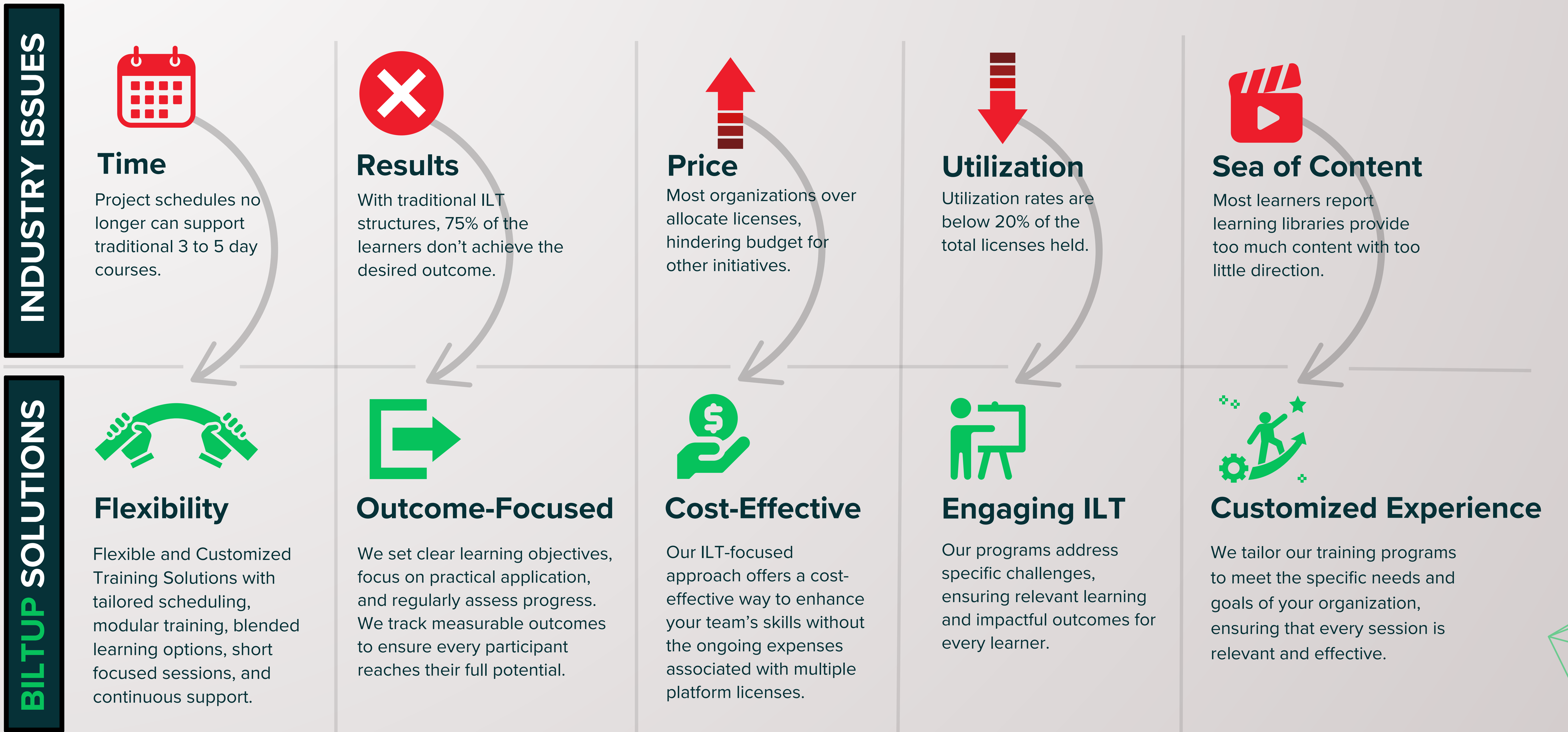




TRANSFORMATIONAL. EFFICIENT.  
CUSTOMIZED TECH LEARNING.

FINDING A CONSULTATIVE TRAINING PARTNER TO DESIGN AND EXECUTE EFFECTIVE LEARNING STRATEGIES **SHOULDN'T BE SO HARD.**



**EASY PATH TO GET STARTED**



**OUR PRACTITIONERS**



**Highly-vetted, Proven Instructor Bench**

- 75 vetted resources and growing
- 310 ILT days of delivery capacity a month
- Direct interaction with the Practitioner throughout the program



**Areas of Expertise**


AI/GenAI, Machine Learning, Data Science, Data Engineering, DevOps, Cloud, Front-End, Back-End, Full Stack Development, Cybersecurity, Agile and Mobile

**YOUR TECH LEARNING PROGRAM SHOULD BE PREDICTABLE, REPEATABLE, AND SCALABLE.**

# Software Architecture


## PROGRAM OVERVIEW

The Software Architecture custombILT program is tailored for software developers poised to embrace leadership positions as architects. The essence of the software architect's role transcends mere job titles, encapsulating the comprehensive design and operational dynamics of a system.



**Audience**

This course is tailored for experienced software developers, technical leads, and engineers aspiring to transition into software architecture roles.



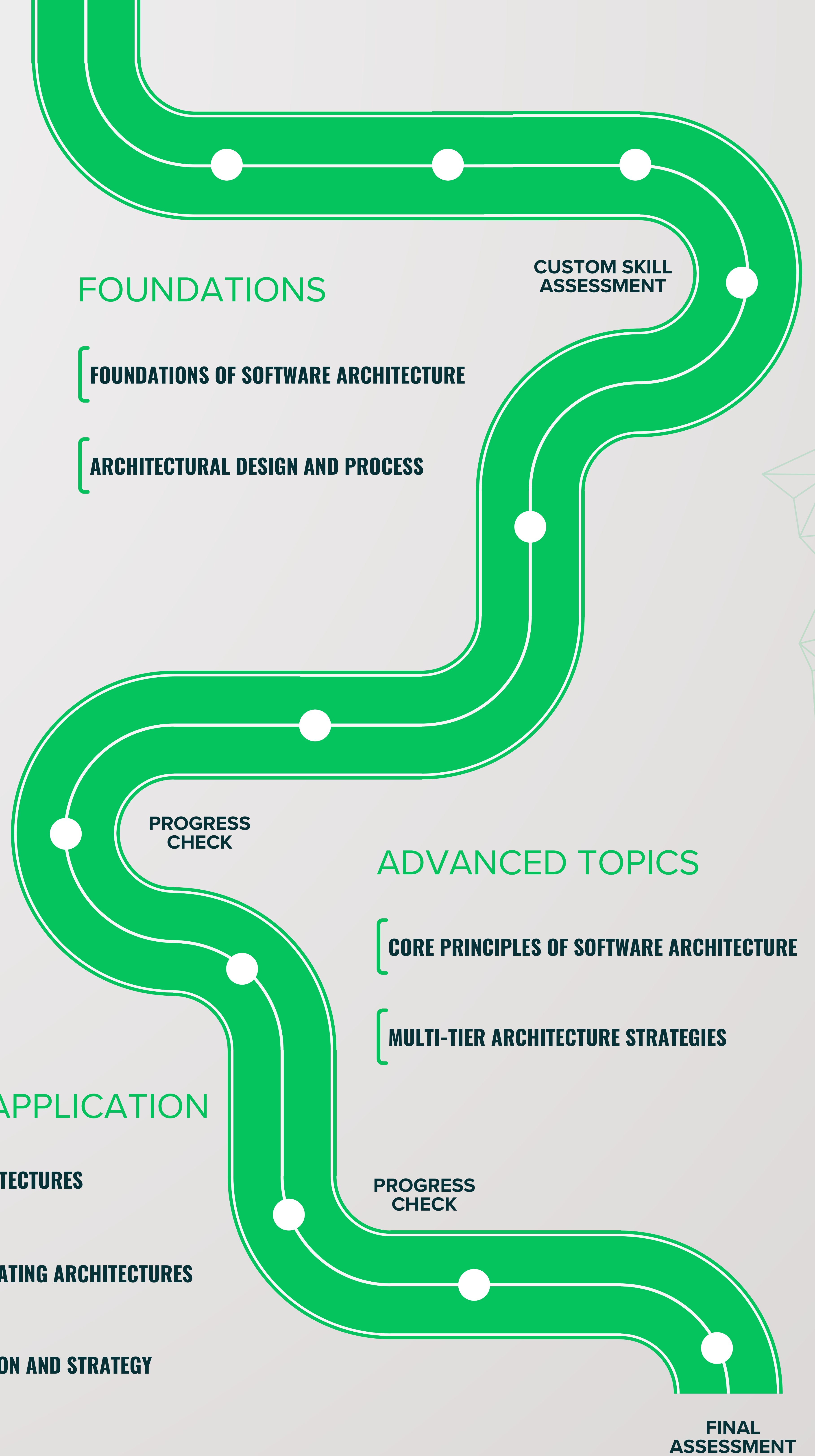
**Intended Outcome**

Participants will acquire the expertise to design, evaluate, and lead the development of scalable software systems, ready to confidently step into leadership roles.

custom  
bILT.

## REAL-WORLD APPLICATION

- [ ADVANCED SERVICE ARCHITECTURES
- [ IMPLEMENTING AND EVALUATING ARCHITECTURES
- [ ARCHITECTURAL EVALUATION AND STRATEGY



SAMPLE LEARNING EXPERIENCE	Week 1					Week 2					Week 3					Week 4				
	M	Tu	W	Th	F	M	Tu	W	Th	F	M	Tu	W	Th	F	M	Tu	W	Th	F
Procured Self-Paced Learning	●	●	●	●	●	●	●	●	●	●	●	●	●	●	●	●	●	●	●	●
Customized Assessment	●	●	●	●	●	●	●	●	●	●	●	●	●	●	●	●	●	●	●	●
Instructor-Led	●	●	●	●	●	●	●	●	●	●	●	●	●	●	●	●	●	●	●	●
Optional Office Hours	●	●	●	●	●	●	●	●	●	●	●	●	●	●	●	●	●	●	●	●
Optional Q&A	●	●	●	●	●	●	●	●	●	●	●	●	●	●	●	●	●	●	●	●