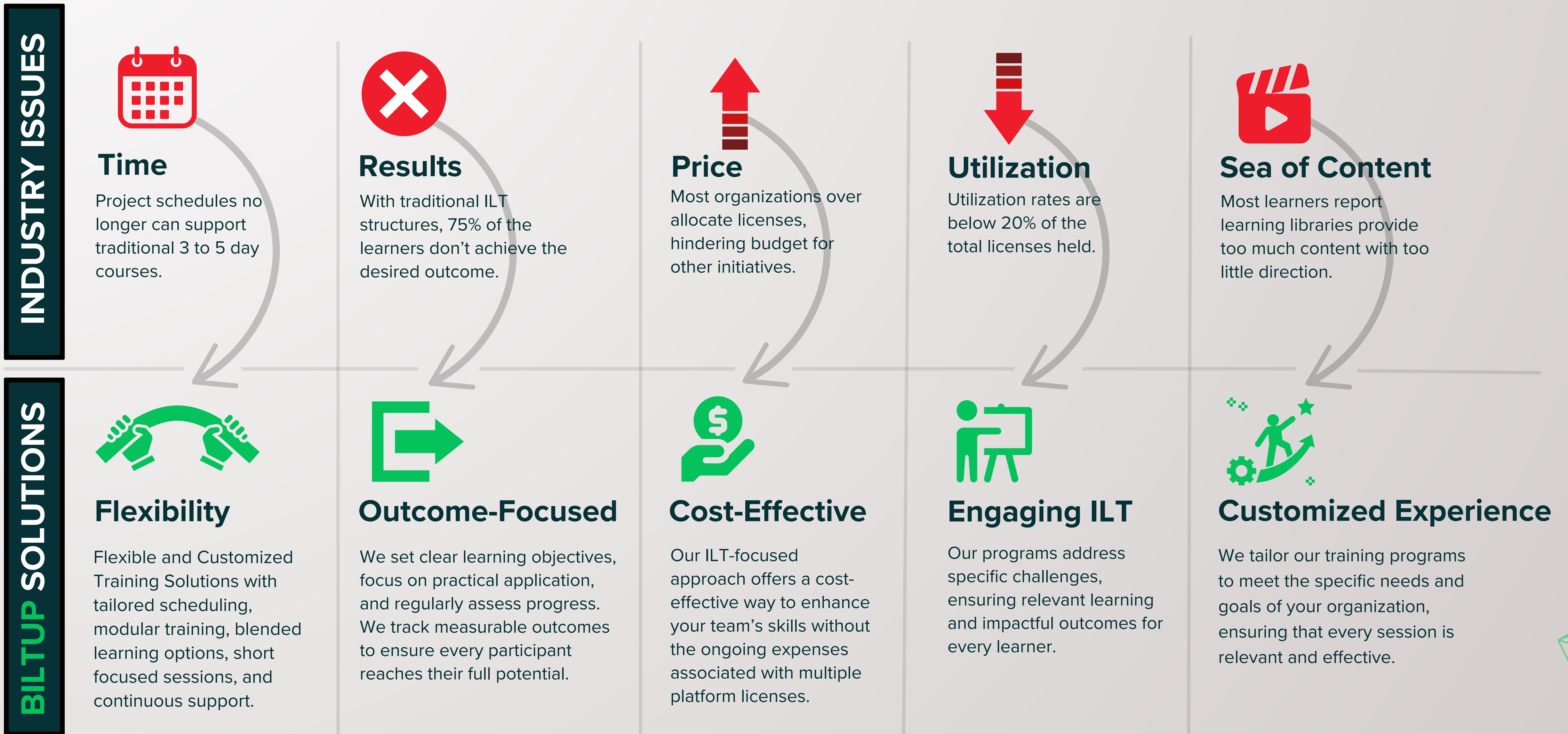




TRANSFORMATIONAL. EFFICIENT.  
CUSTOMIZED TECH LEARNING.

FINDING A CONSULTATIVE TRAINING PARTNER TO DESIGN AND EXECUTE EFFECTIVE LEARNING STRATEGIES **SHOULDN'T BE SO HARD.**



**EASY PATH TO GET STARTED**



**OUR PRACTITIONERS**



**Highly-vetted, Proven Instructor Bench**

- 75 vetted resources and growing
- 310 ILT days of delivery capacity a month
- Direct interaction with the Practitioner throughout the program



**Areas of Expertise**


AI/GenAI, Machine Learning, Data Science, Data Engineering, DevOps, Cloud, Front-End, Back-End, Full Stack Development, Cybersecurity, Agile and Mobile

**YOUR TECH LEARNING PROGRAM SHOULD BE PREDICTABLE, REPEATABLE, AND SCALABLE.**

# Data Engineering


## PROGRAM OVERVIEW

The Data Engineering for Developers customBILT program transitions existing software developers into skilled data engineers by mastering data modeling, ETL, warehousing, and real-time processing, reinforced by hands-on labs and projects.



**Audience**

Existing Python developers transitioning into Data Engineering.



**Intended Outcome**

Equip the learners with a comprehensive understanding and practical skills in various aspects of data engineering.

**custom**  
**bILT.**

## REAL-WORLD APPLICATION

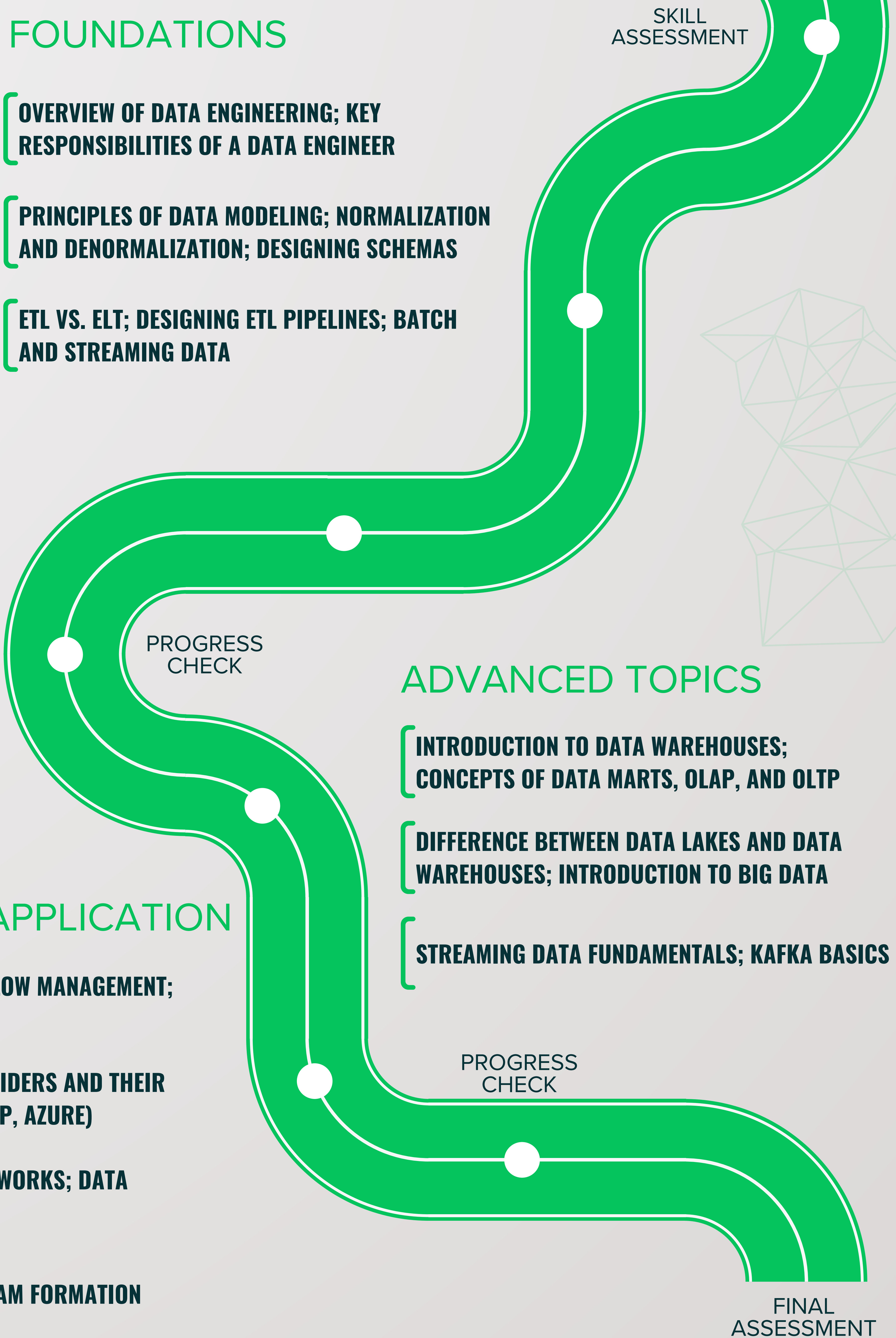
- INTRODUCTION TO WORKFLOW MANAGEMENT; APACHE AIRFLOW BASICS
- OVERVIEW OF CLOUD PROVIDERS AND THEIR DATA SOLUTIONS (AWS, GCP, AZURE)
- DATA GOVERNANCE FRAMEWORKS; DATA QUALITY METRICS
- PROJECT BRIEFING AND TEAM FORMATION

## FOUNDATIONS

- OVERVIEW OF DATA ENGINEERING; KEY RESPONSIBILITIES OF A DATA ENGINEER
- PRINCIPLES OF DATA MODELING; NORMALIZATION AND DENORMALIZATION; DESIGNING SCHEMAS
- ETL VS. ELT; DESIGNING ETL PIPELINES; BATCH AND STREAMING DATA

## ADVANCED TOPICS

- INTRODUCTION TO DATA WAREHOUSES; CONCEPTS OF DATA MARTS, OLAP, AND OLTP
- DIFFERENCE BETWEEN DATA LAKES AND DATA WAREHOUSES; INTRODUCTION TO BIG DATA
- STREAMING DATA FUNDAMENTALS; KAFKA BASICS



SAMPLE LEARNING EXPERIENCE	Week 1					Week 2					Week 3					Week 4				
	M	Tu	W	Th	F	M	Tu	W	Th	F	M	Tu	W	Th	F	M	Tu	W	Th	F
Procured Self-Paced Learning	●	●	●	●	●	●	●	●	●	●	●	●	●	●	●	●	●	●	●	●
Customized Assessment	●	●	●	●	●	●	●	●	●	●	●	●	●	●	●	●	●	●	●	●
Instructor-Led	●	●	●	●	●	●	●	●	●	●	●	●	●	●	●	●	●	●	●	●
Optional Office Hours	●	●	●	●	●	●	●	●	●	●	●	●	●	●	●	●	●	●	●	●
Optional Q&A	●	●	●	●	●	●	●	●	●	●	●	●	●	●	●	●	●	●	●	●